



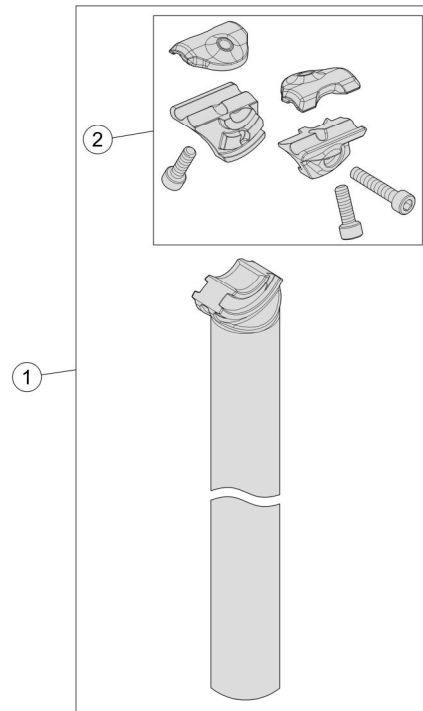
Independent Top Clamp

ITC Seatpost

SL-K ITC SB20 SP-RK-222-ITC

SL-K ITC SBO SP-RK-226-ITC

ITC seatpost Newest patent pending seatpost head with flip-flop clamp design for variable setbacks



Item No.	FSA Code No.	Description	Notes
1	192-0035001031	SL-K ITC SB20/10 UD carbon Shaft with bonded ITC clamp head $\Phi 27.2 \times 350$	Black K graphic ★
2	192-0009000050	ITC SB20 Seatpost Top Clamp Assembly	
	192-0010000050	ITC SBO Seatpost Top Clamp Assembly	
3	192-9040	ME068 Installation Compound 5 gr. Consumer size packet	Carbon Fiber Seatposts

★Optional Parts

Item No.	FSA Code No.	Description	Notes
1	192-0035005031	SL-K ITC SB20/10 UD carbon Shaft with bonded ITC clamp head $\Phi 31.6 \times 350$	Black K graphic
1	192-0055001031	SL-K ITC SB0/15 UD carbon Shaft with bonded ITC clamp head $\Phi 27.2 \times 350$ For MTB	Black K graphic
	192-0055033031	SL-K ITC SB0/15 UD carbon Shaft with bonded ITC clamp head $\Phi 27.2 \times 400$ For MTB	
1	192-0055005031	SL-K ITC SB0/15 UD carbon Shaft with bonded ITC clamp head $\Phi 31.6 \times 350$ For MTB	Black K graphic
	192-0055029031	SL-K ITC SB0/15 UD carbon Shaft with bonded ITC clamp head $\Phi 31.6 \times 400$ For MTB	